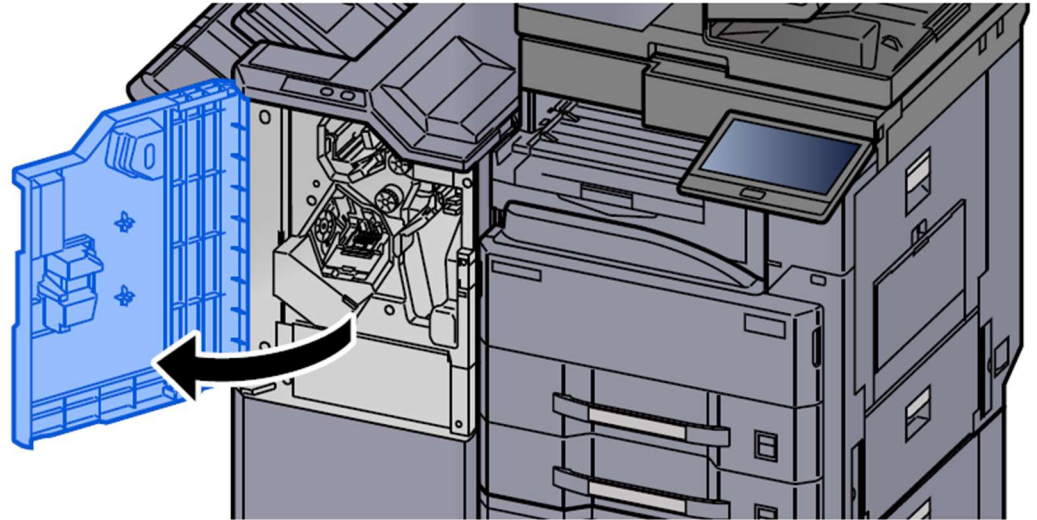


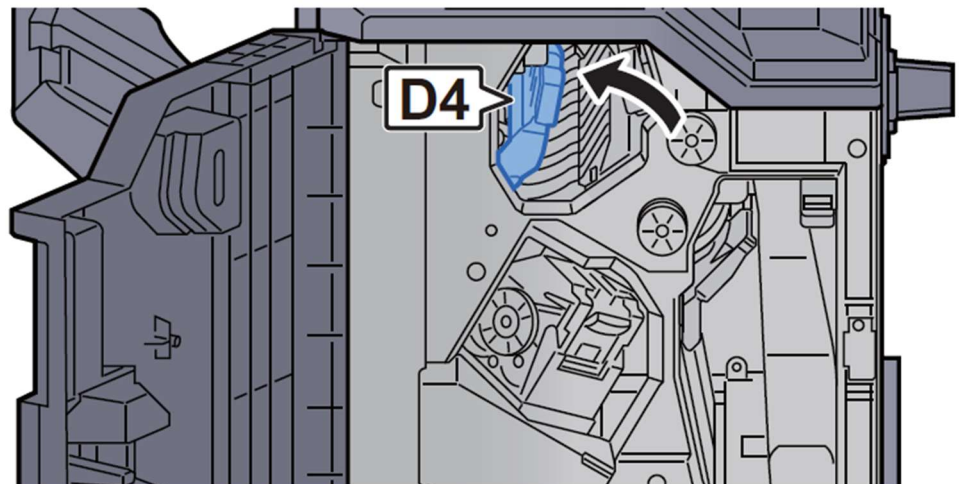
Clearing a Staple Jam

Clearing a staple jam of the 3,000-sheet Finisher

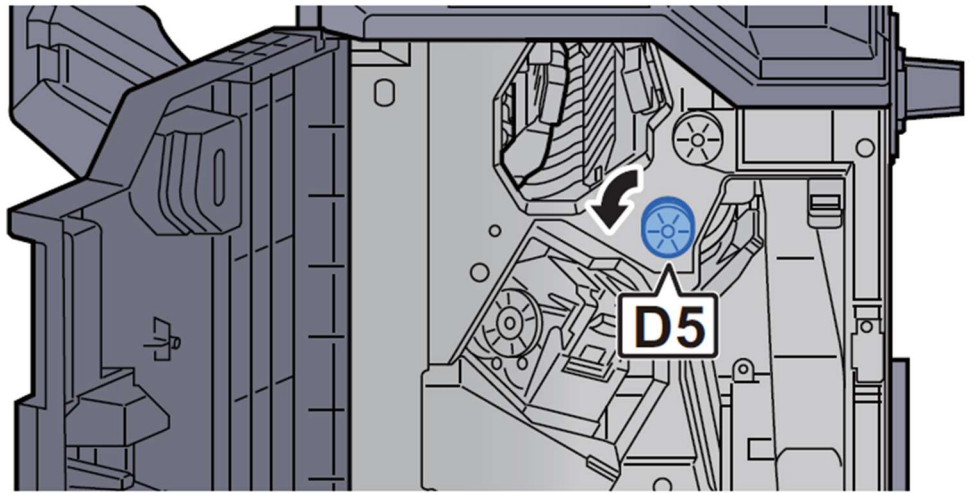
- 1 **Open the finisher front cover.**



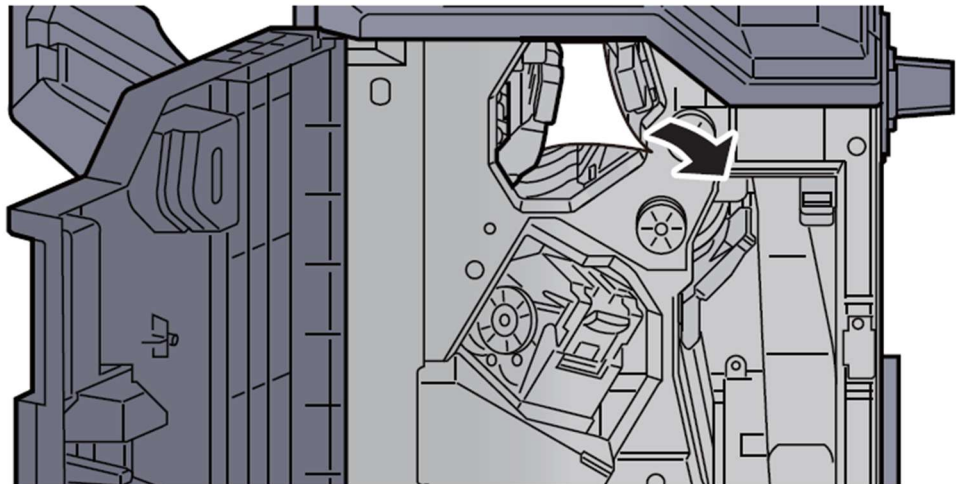
- 2 **Open the conveyor guide (D4).**



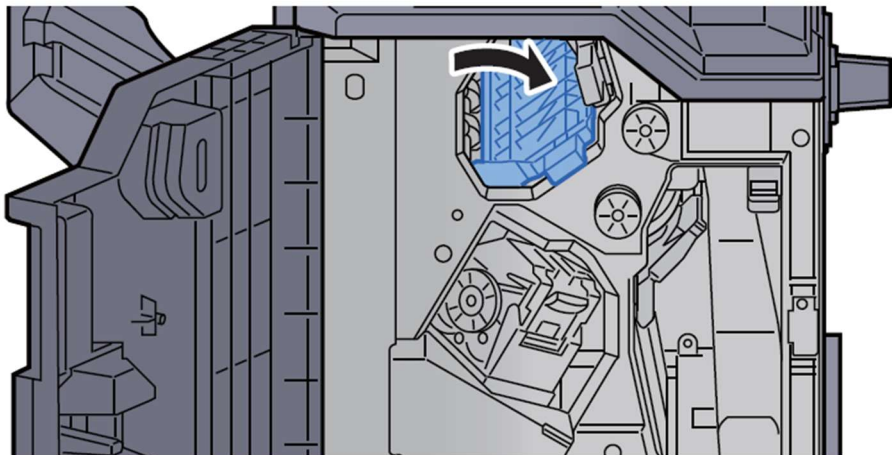
3 Turn knob (D5).



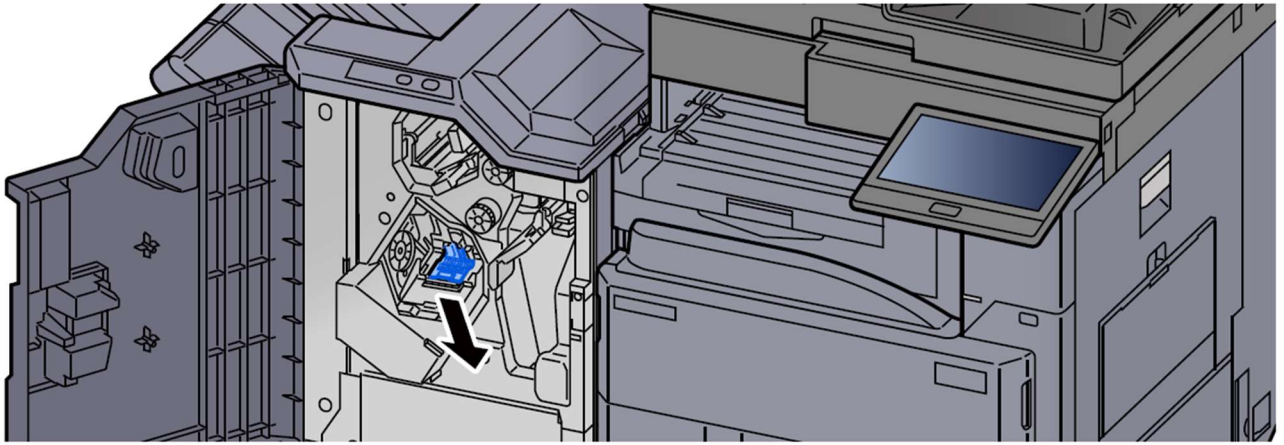
4 Remove any jammed paper.



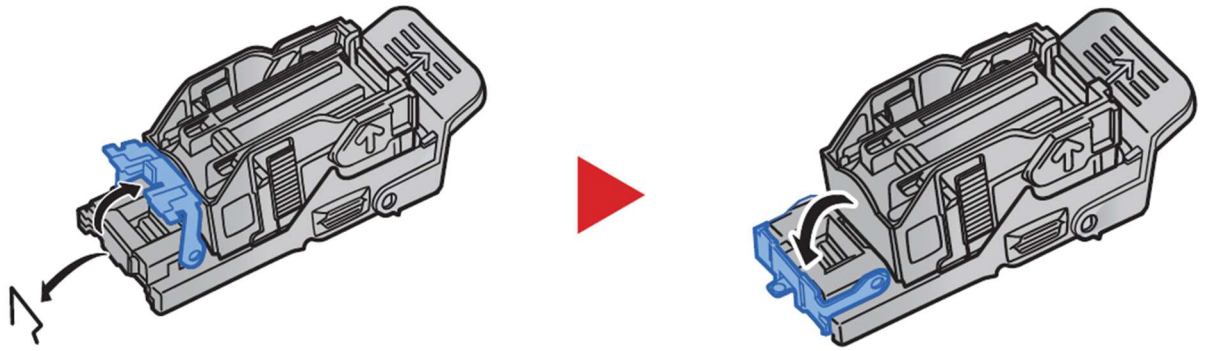
5 Return the conveyor guide (D4) to the original position.



6 Remove the Staple Cartridge Holder (A).



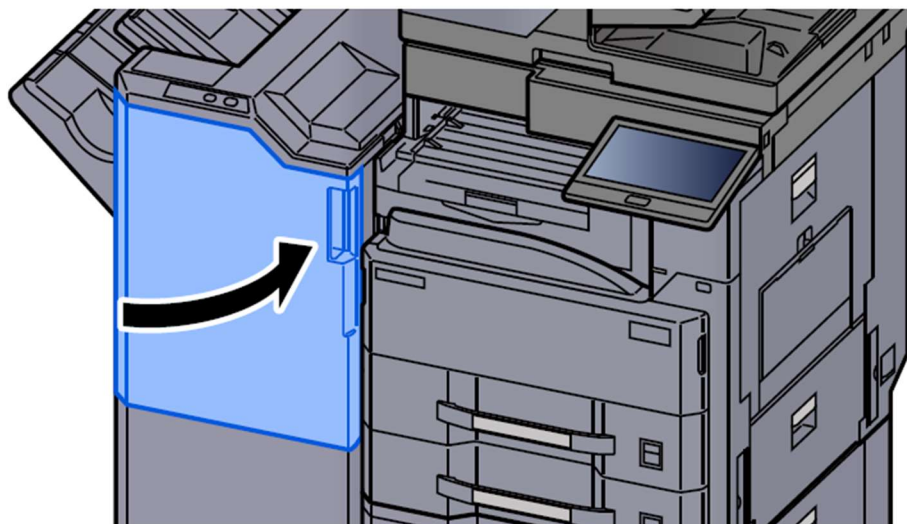
7 Remove the jammed staple.



8 Install the Staple Cartridge Holder (A).



9 Return the cover to the original position.



**KYOCERA Document Solutions UK
Eldon Court, 75-77 London Road,
Reading, RG1 5BS**

Web: www.kyoceradocumentsolutions.co.uk