

Replacing Staples

(Folding Unit)

When the Staple Unit runs out of staples, the following messages will be displayed. The staple cartridge holder need to be replenished with staples.

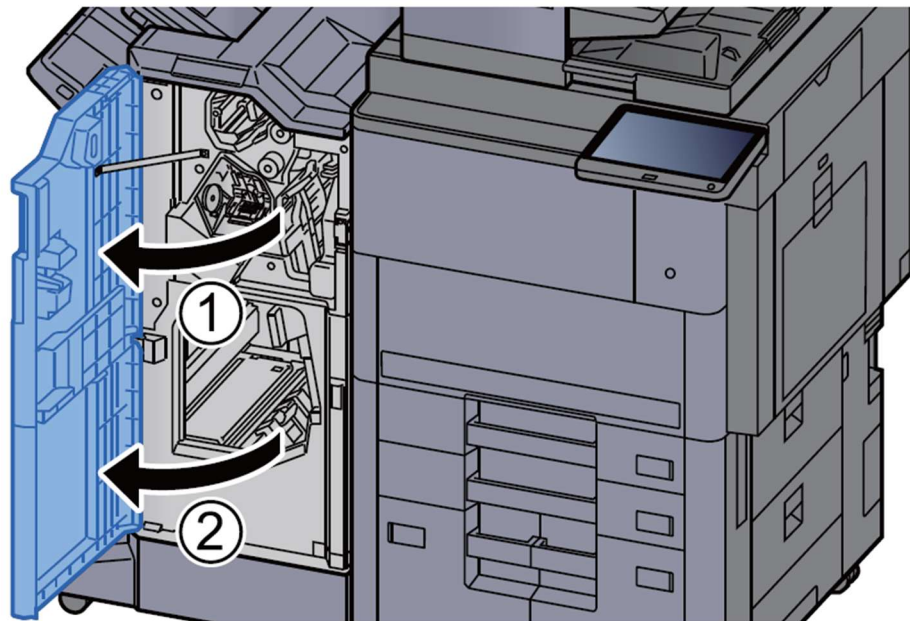
"Staple is empty."



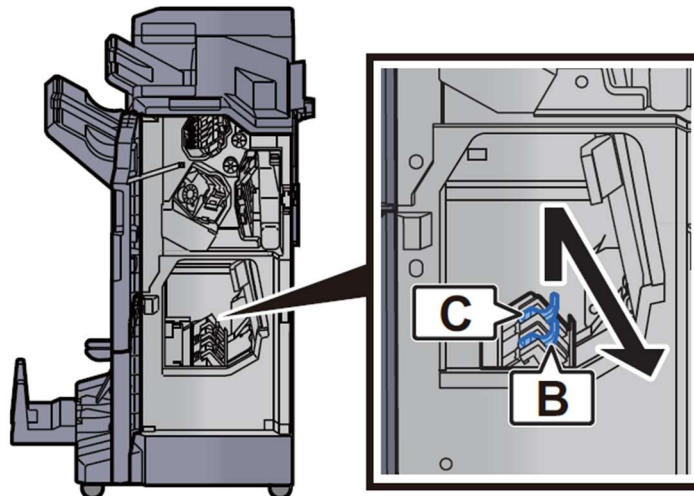
NOTE

If the Staple Unit runs out of staples, contact your dealer or service representative.

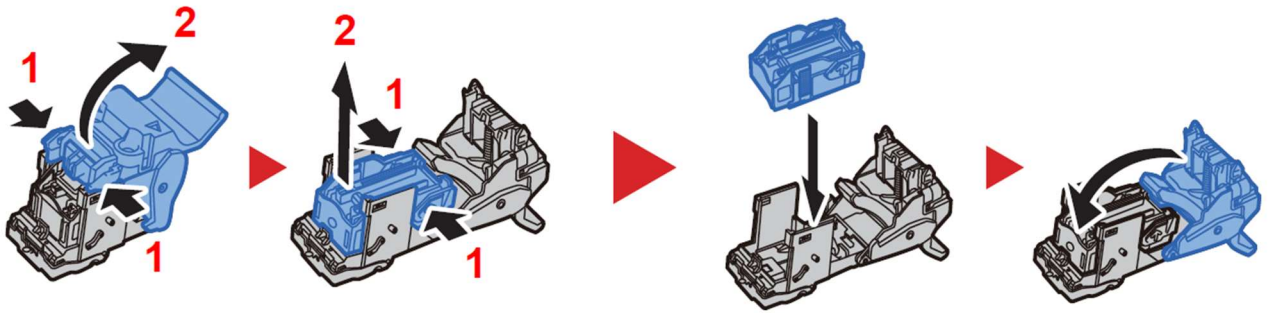
1 Open the finisher front cover 1 and 2.



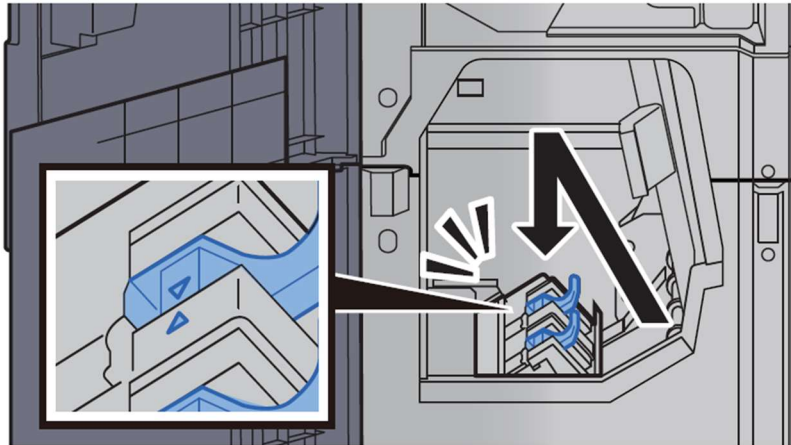
2 Remove the Staple Cartridge Holder (B) or (C).



3 Replace the staples.



4 Install the Staple Cartridge Holder (B) or (C).



5 Close the covers.

