

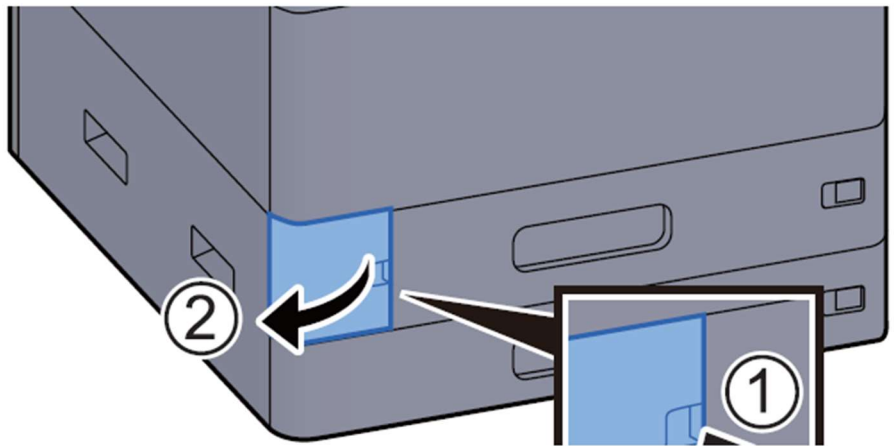
# Replace the Waste Toner Box

When the waste toner box is full, the following message will be displayed. Immediately replace the waste toner  
"Replace the waste toner box."

## CAUTION

Do not attempt to incinerate parts which contain toner. Dangerous sparks may cause burns.

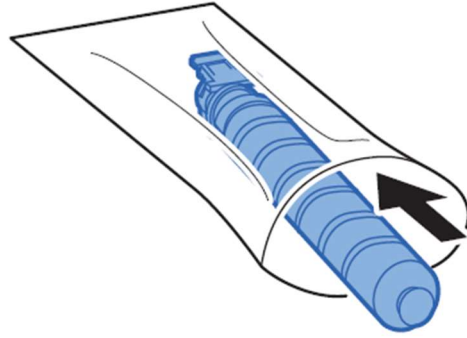
### 1 Open the waste toner box cover.



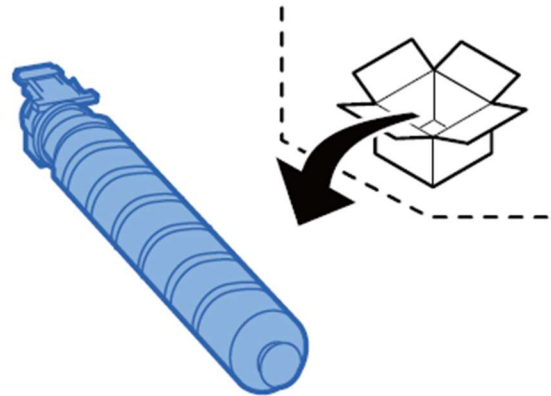
### 2 Remove the Waste Toner Box.



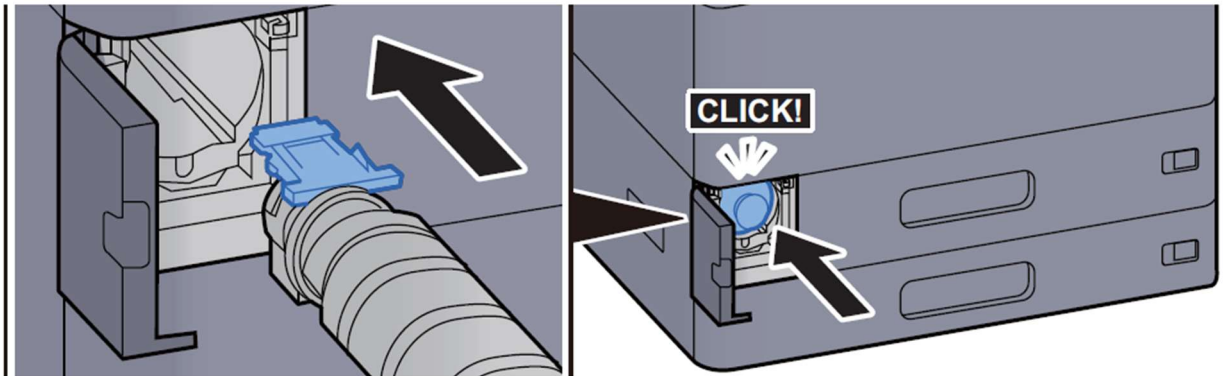
**3 Put used Waste Toner Box into the plastic waste bag.**



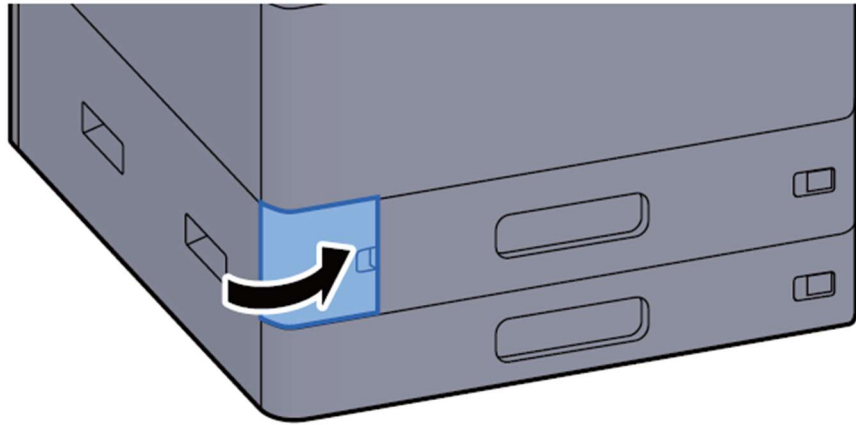
**4 Remove the new Waste Toner Box.**



**5 Install the Waste Toner Box.**



## 6 Close the waste toner box cover.



### NOTE

Return the exhausted waste toner box to your dealer or service representative. The collected waste toner box will be recycled or disposed in accordance with the relevant regulations.