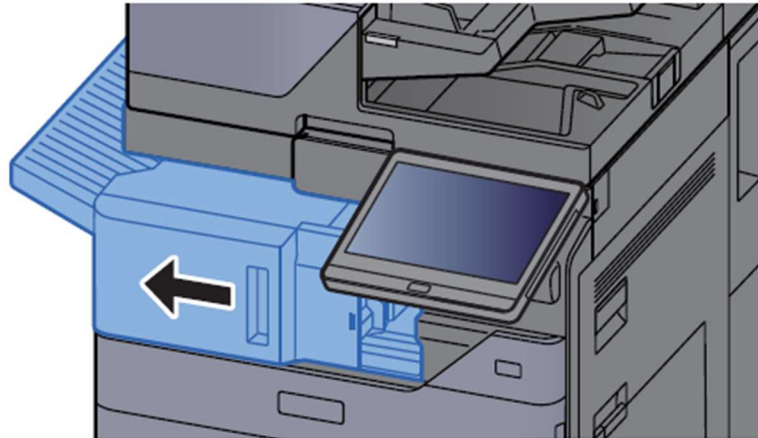


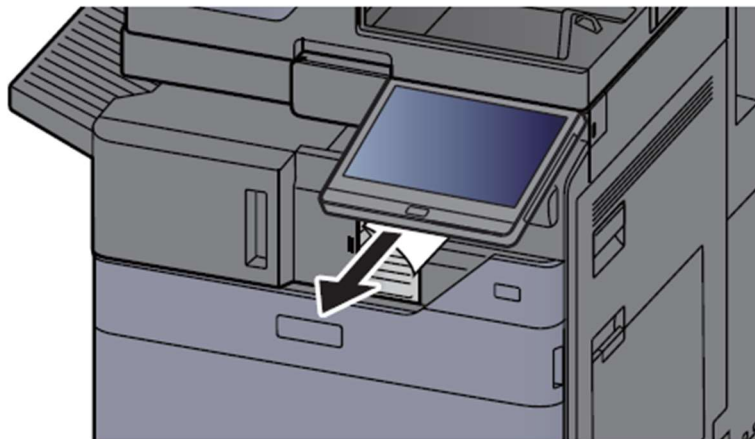
Clearing a Staple Jam

Clearing a staple jam of the Inner Finisher

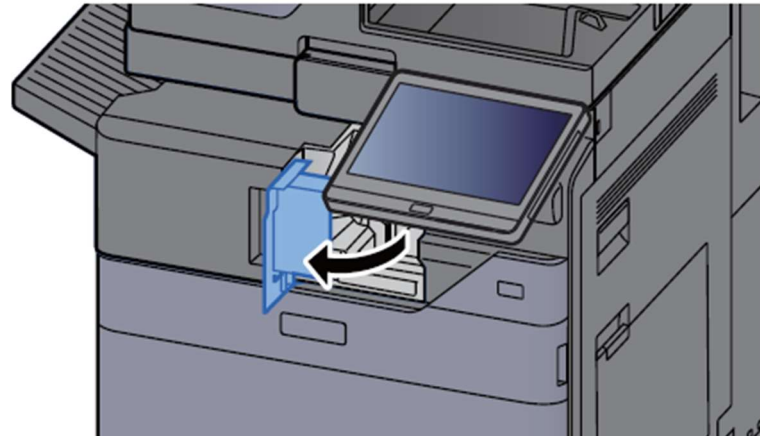
1 Open the inner finisher unit.



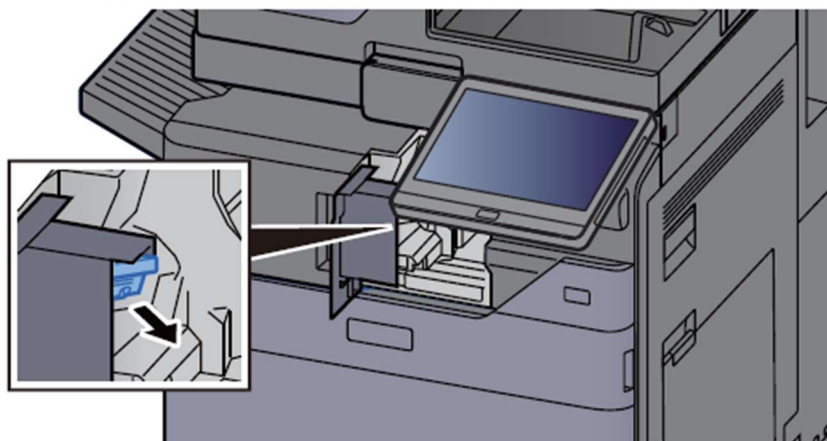
2 Remove any jammed paper.



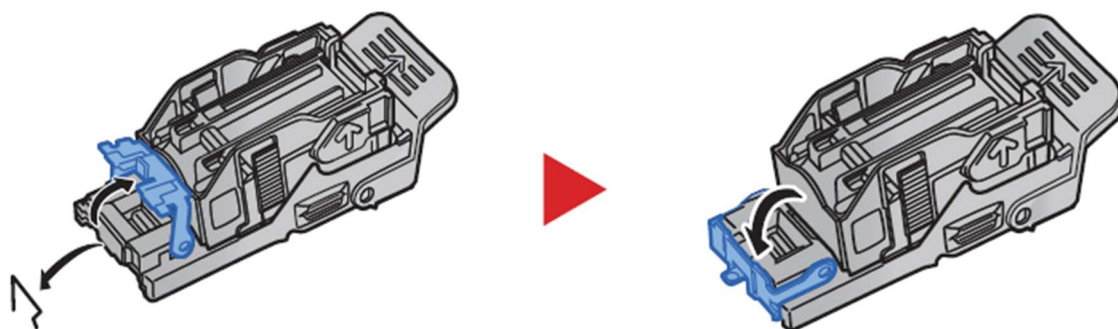
3 Open the staple cover.



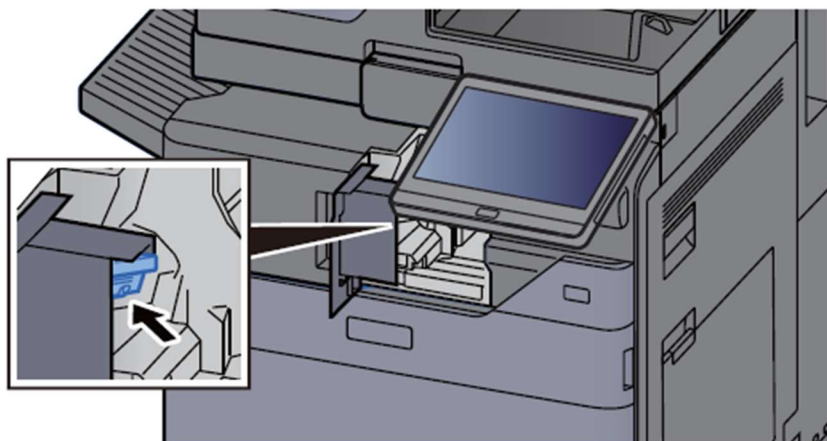
4 Remove the Staple Cartridge Holder.



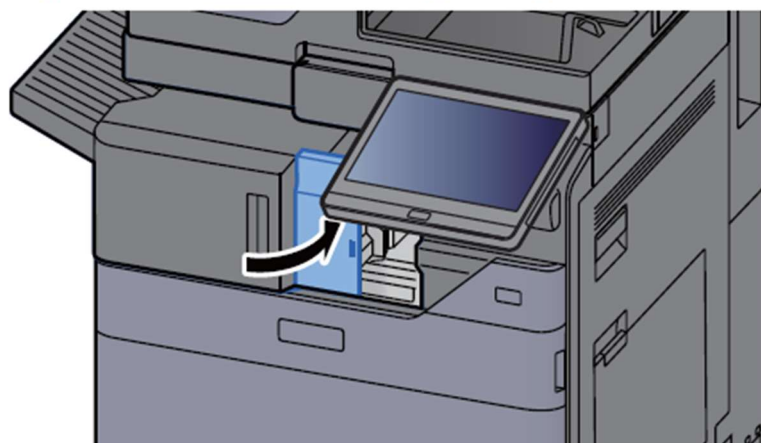
5 Remove the jammed staple.



6 Install the Staple Cartridge Holder.



7 Return the staple cover to the original position.



8 Return the unit to the original position.

