

# Regular Maintenance

## Cleaning

Clean the machine regularly to ensure optimum printing quality.

### CAUTION

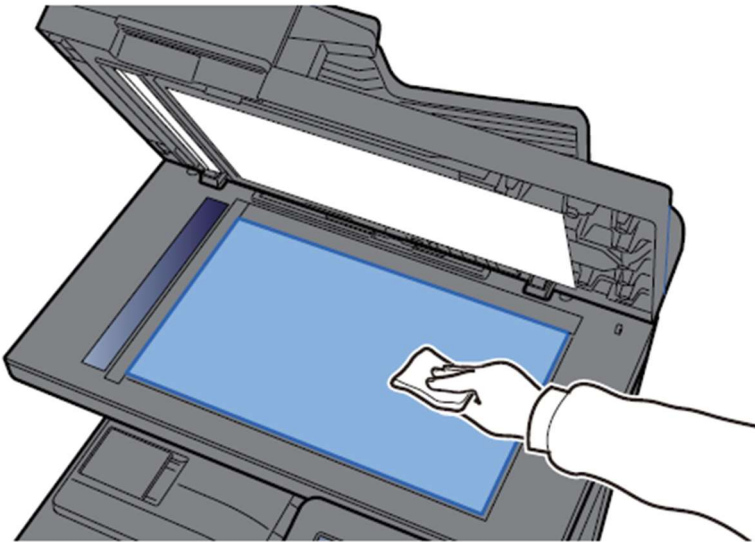
For safety, always unplug the power cord before cleaning the machine.

## Cleaning Glass Platen

Wipe the glass platen with a soft cloth dampened with alcohol or mild detergent.

### IMPORTANT

Do not use thinner or other organic solvents.

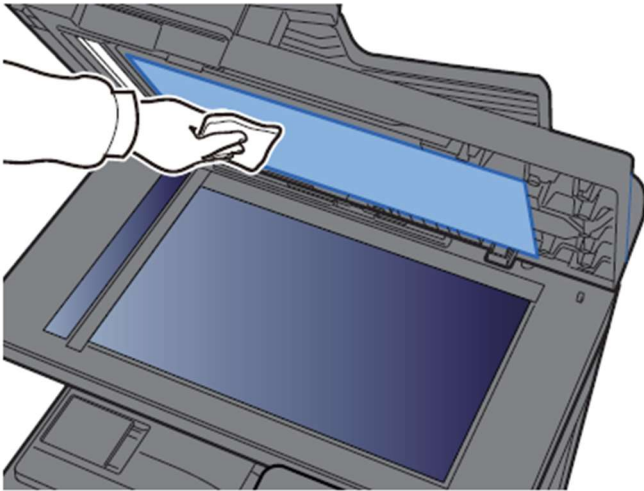


# Cleaning inside of the Document Processor

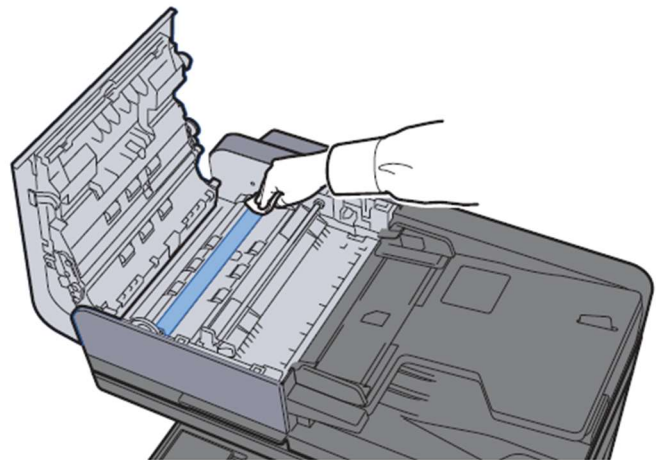
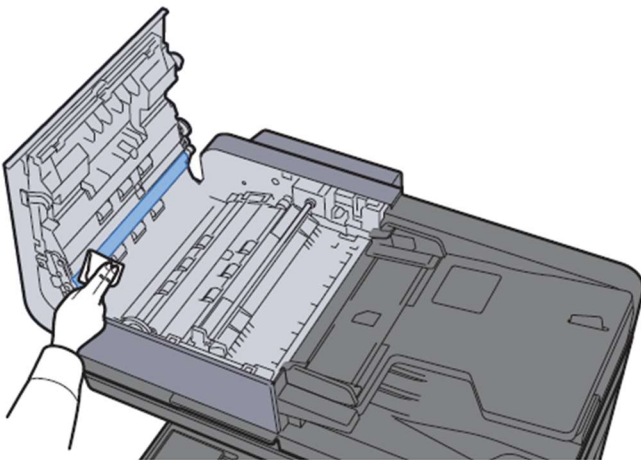
Wipe the inside of the document processor with a soft cloth dampened with alcohol or mild detergent.

**✔ IMPORTANT**

Do not use thinner or other organic solvents.



## Dual scanning area



## Cleaning Slit Glass

When using the document processor, clean the slit glass surface and the reading guide with the dry cloth.

✔ **IMPORTANT**

Do not use water, soap or solvents for cleaning.

💡 **NOTE**

Dirt on the slit glass or the reading guide may cause black streaks to appear in the output.

